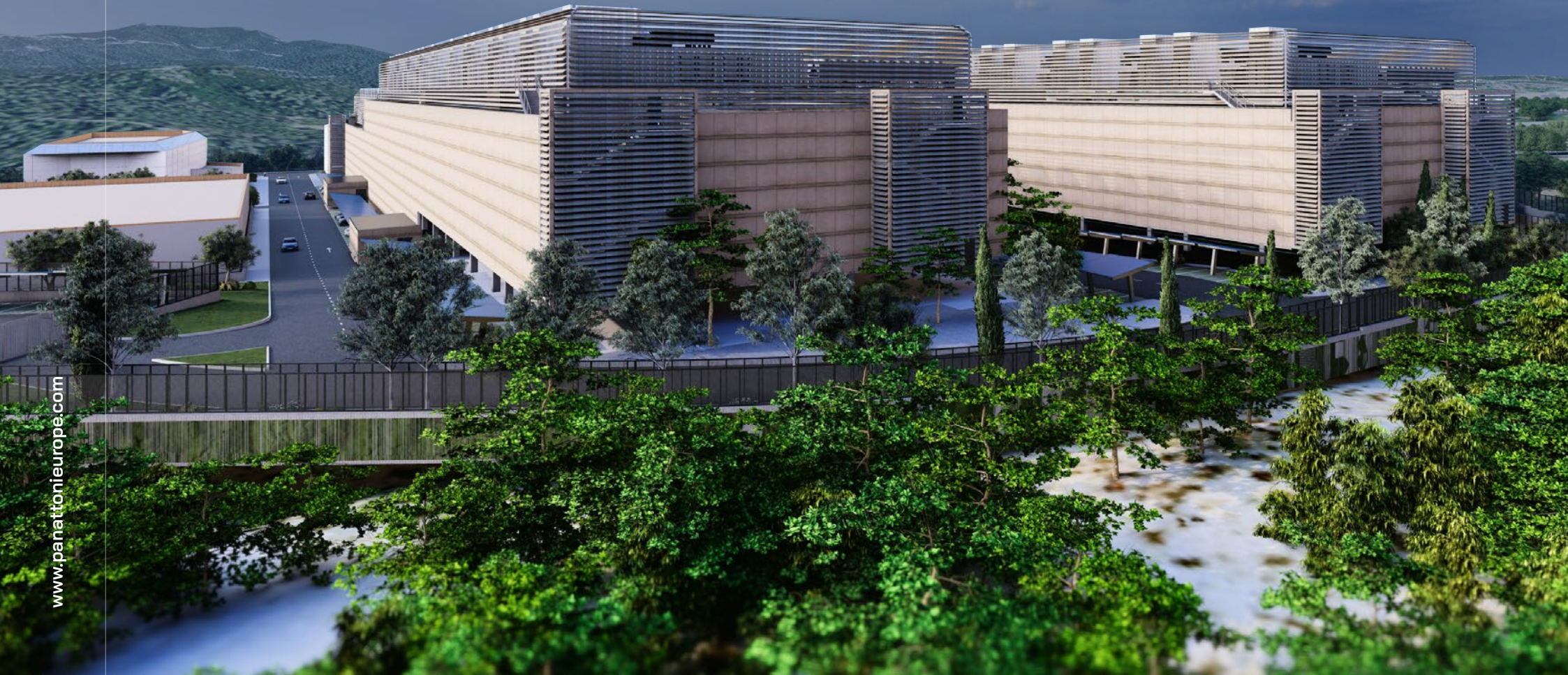




# Data Center

Our plan is to develop the largest Data Center Campus in Barcelona, Spain,  
with a minimum Power Supply guaranteed of 42 MWs



## Introduction

---

## Unbeatable time to market

- Land connected to 42MWs (25kW) of power supply
  - Building license ready
  - Second phase of an additional supply of 46MWs
- 

## Unique opportunity to develop from a Core & Shell up to a Fully Fitted facility

We can tailor our services to meet your specific requirements and seamlessly scale as your business grows.

---

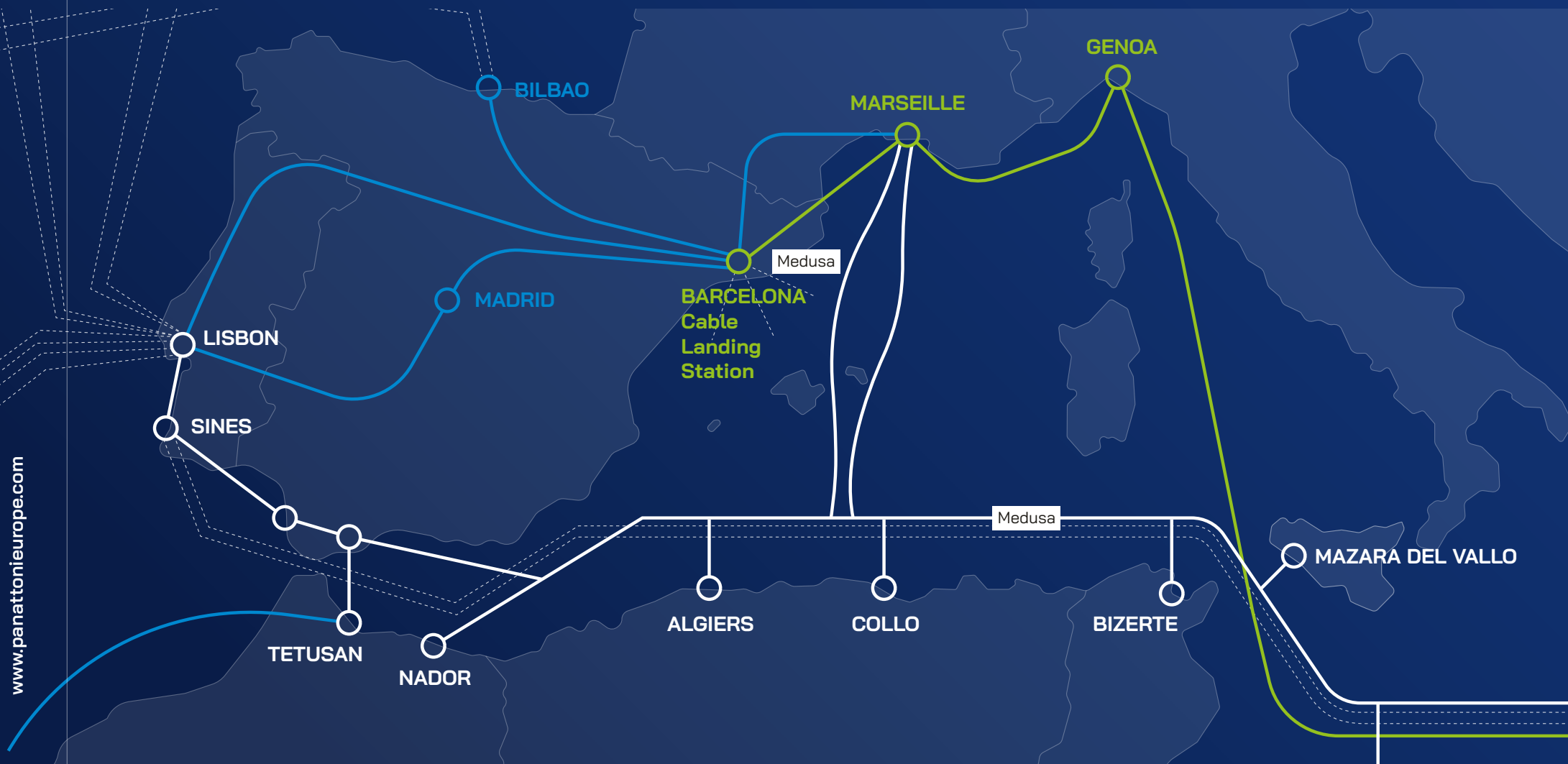
## Strategic location

Barcelona is emerging as next data center hub in Iberia given the low availability power supply in Madrid and the great data connectivity.

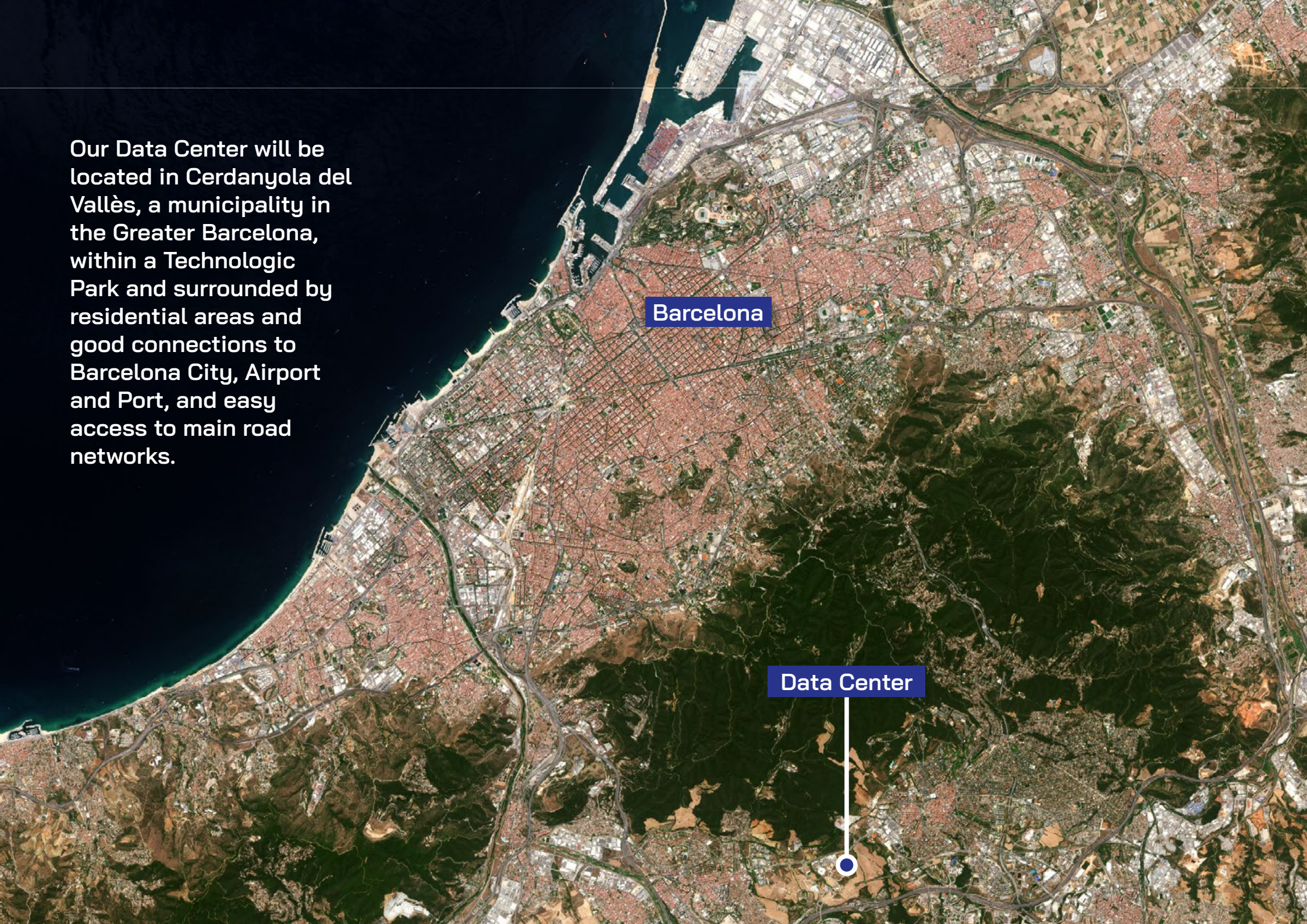


# Location overview

Barcelona is leveraging its existing market competitive advantage through a significant increase in connectivity, with a compound annual growth rate (CAGR) of 35%.



**Our Data Center will be located in Cerdanyola del Vallès, a municipality in the Greater Barcelona, within a Technologic Park and surrounded by residential areas and good connections to Barcelona City, Airport and Port, and easy access to main road networks.**



**Barcelona**

**Data Center**



# Consolidated area

Local authorities are strongly committed to supporting the development of data centers and high tech companies in this specific park.

**Data Center**  
plot area: 60,859 sq.m

ST Codonyers



ST Cerdanyola

AP-7 / B-30

Adam

B-1413

AQ COMPUTE

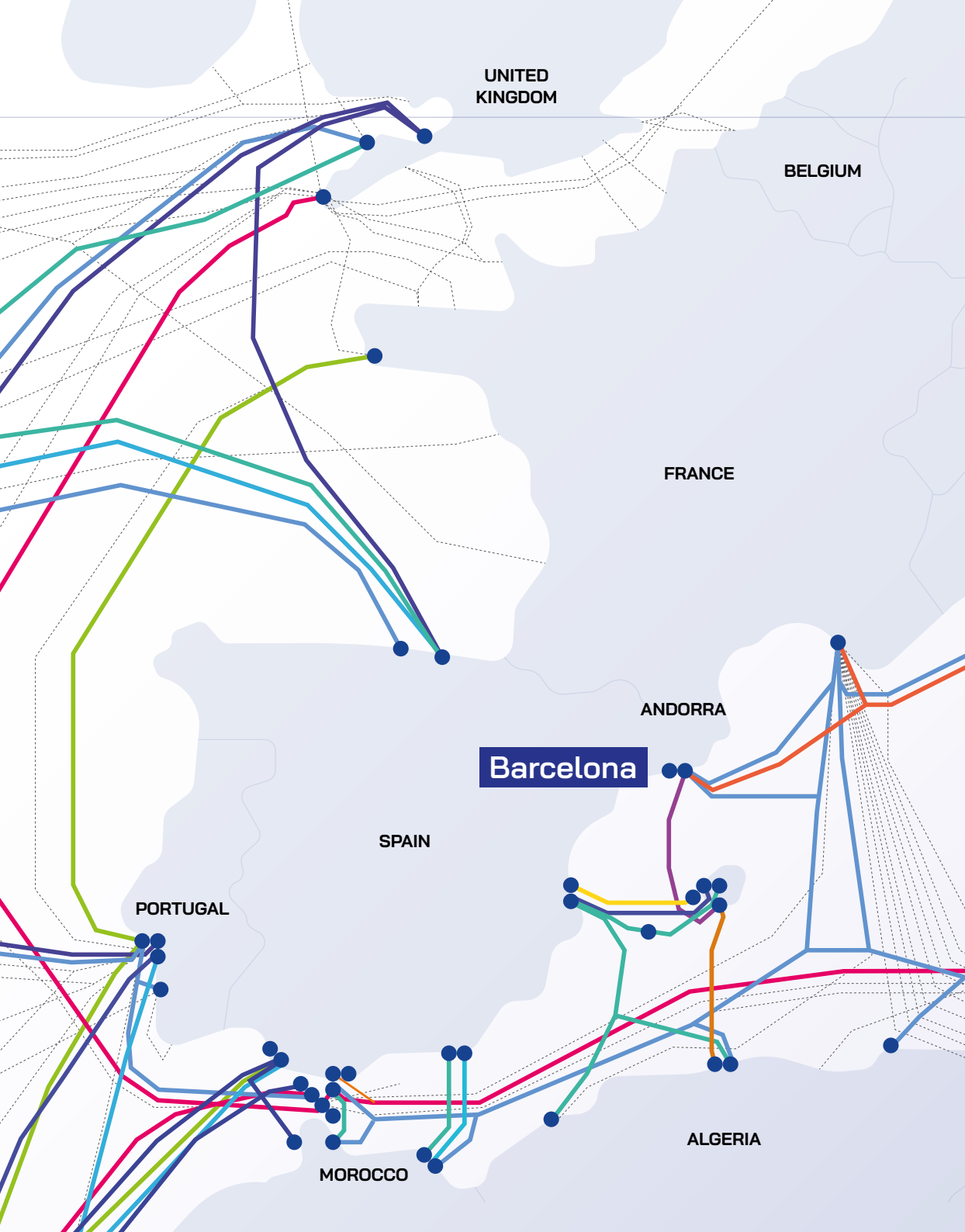
T Systems

ALBA

GTR  
Adam

CaixaBank

CaixaBank



# Connectivity

## Submarine cable map



**Submarine cables landing into Spain**  
>30 submarine cables

The most recent:

- Anjana
- Grace Hopper



**3 Submarine cables landing into Barcelona area**

**2Africa**

Owners: Bayobab, China Mobile, Meta, Orange, Saudi Telecom, Telecom Egypt, Vodafone, WIOCC

**Medloop**

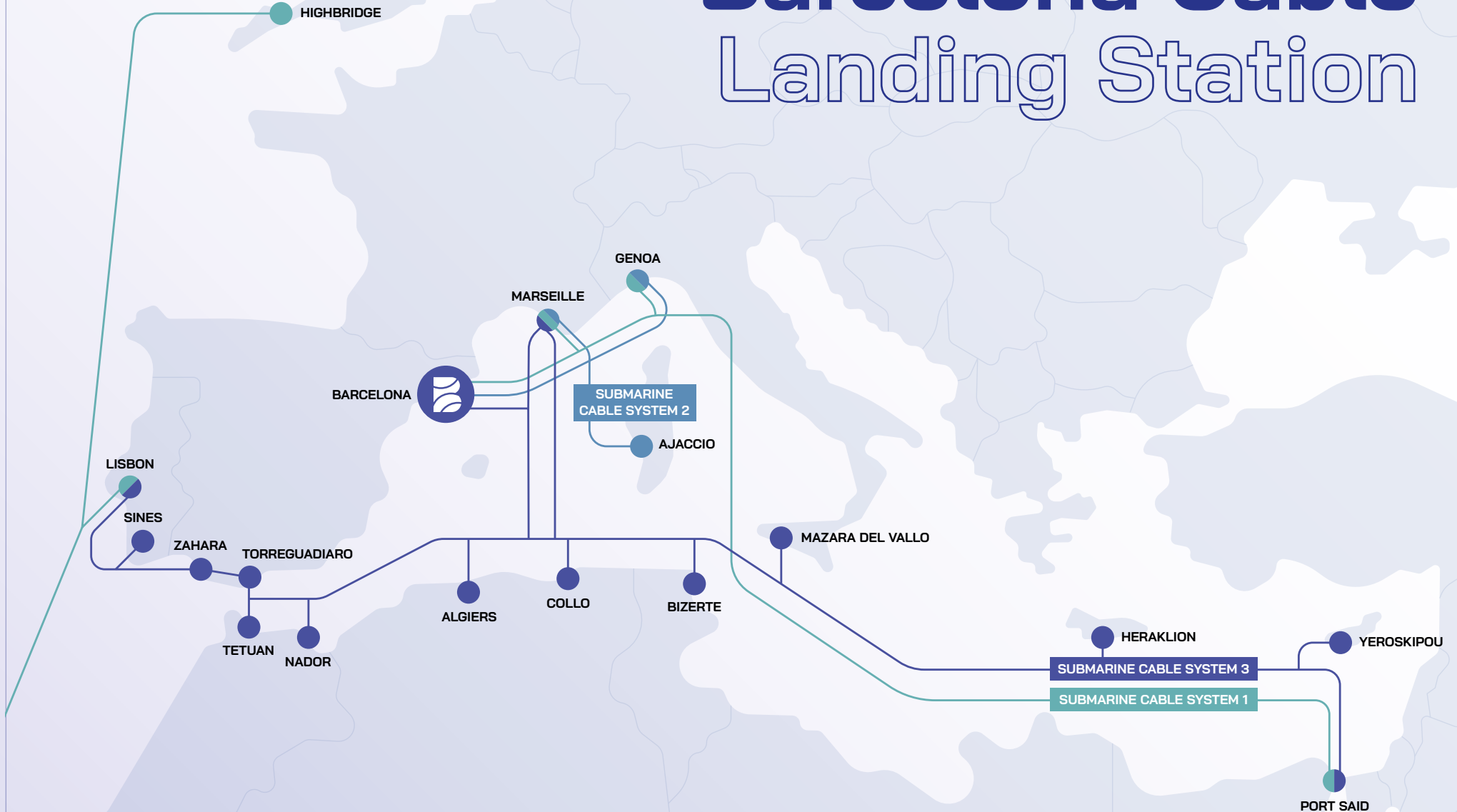
Owner: SIPARTECH

**Medusa submarine cable system (Sant Adria)**

Owner: AFR-IX Telecom



# Barcelona Cable Landing Station





Data Center

Barcelona Metropolitan Area

Barcelona

Barcelona CLS

# Connections to Parc de'Alba



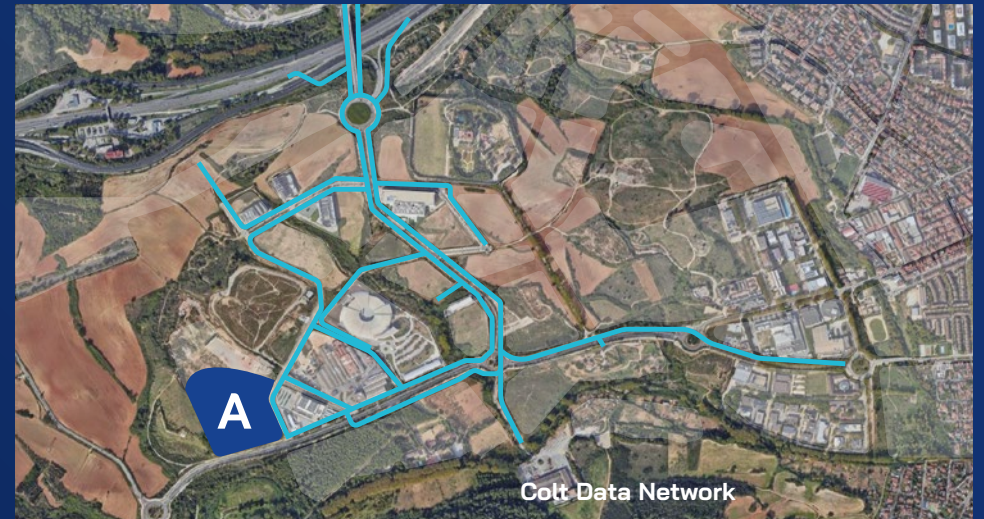
# Microlocation

## Cerdanyola DC Hub (II)



### Fiber connectivity

Apart from the reliable power supply infrastructure in place, the area has unbeatable connectivity in terms of availability of fibre and telecom operators. There are currently 7 operators in the Park with their own infrastructures and sufficient reserve for future operations.







# Data center infrastructure



## Power Supply

- Panattoni has already been granted with 42 MWs for phase I, by Endesa.
- The national grid operator has approved additional power capacity for the area and has identified our plot as a potential location for the new substation.



## Power Substations feeding Panattoni's Data Center

Power supply to our DC wil basically come from nearby power substation:

**ST Codonyers** – at 800 m distance, connected to the plot which provides 42 MWs for Phase 1 at 25 kW.



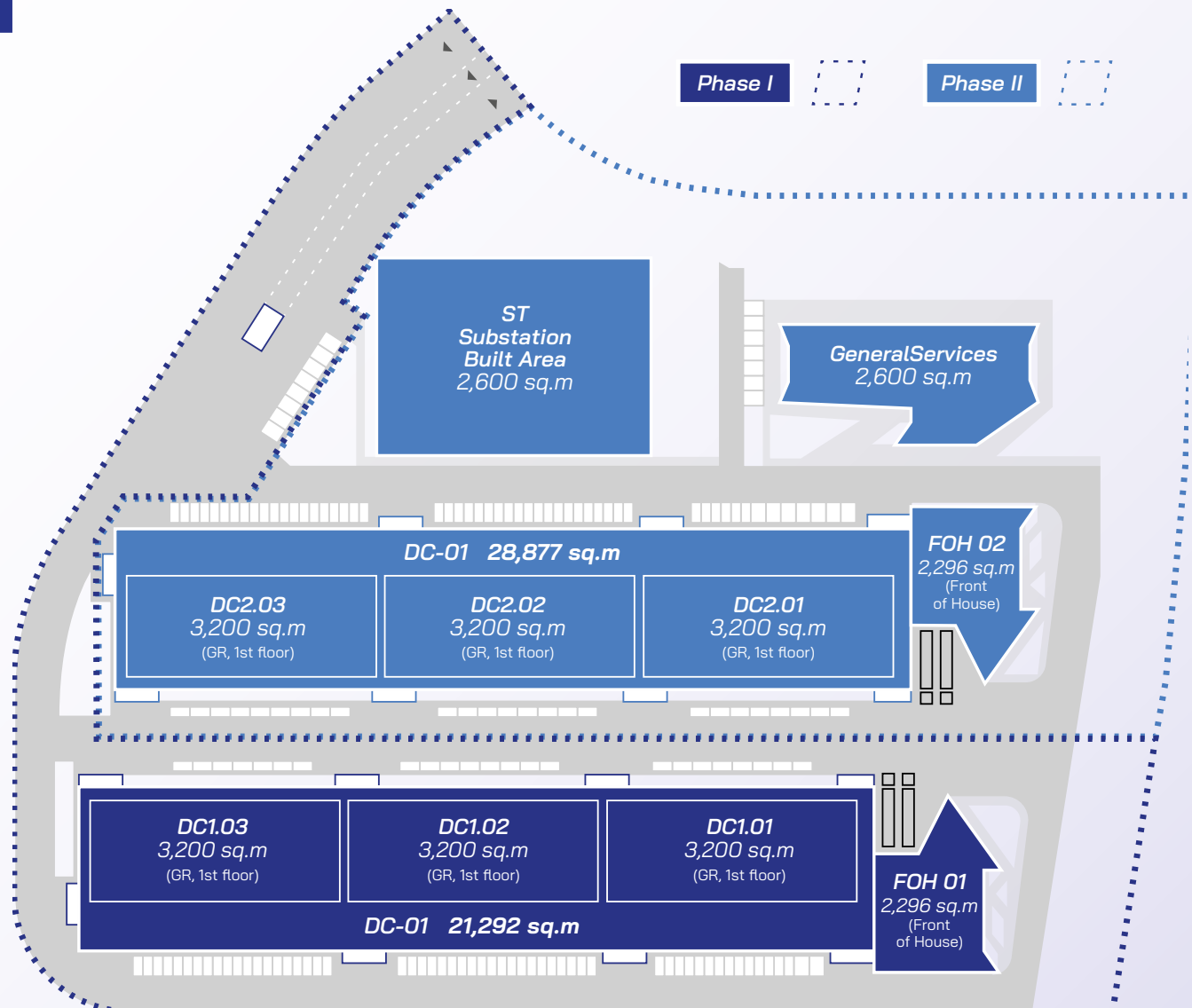
# Build-area overview

**Phase I**  
21,292 sq.m  
42 MW

**Electrical substation and  
general services building:**  
5,200 sq.m

**Phase II:**  
28,877 sq.m  
46 MW

**TOTAL:**  
50,169 sq.m (max. buildable  
area 62,162 sq.m)



# Visualizations













[www.panattonieurope.com](http://www.panattonieurope.com)